

# Ground Lease or Build to Suit



## Pacific Gateway Business Park, Lot 3

19.82 ± acres

- Located adjacent to Green River off South 212th St and 59th Place in Kent, WA
- The Park is fully-entitled with all utilities, roads and an off-site stormwater retention system



## SEGALE PROPERTIES

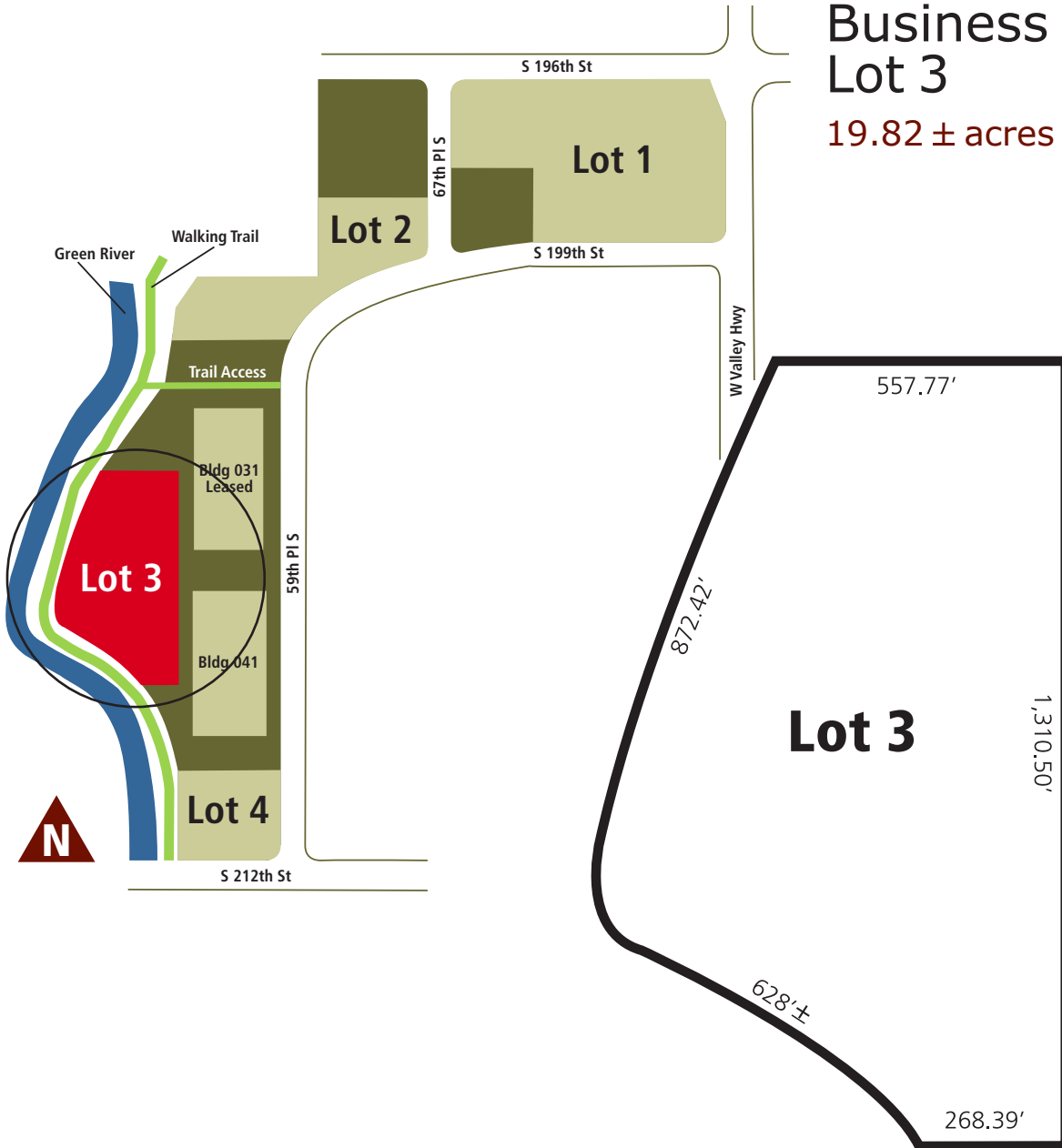
PO Box 88028 Tukwila, WA 98138  
206 575-2000 [www.segaleproperties.com](http://www.segaleproperties.com)

Contact Diane M. Decker, CPM®  
206 575-2000  
[ddecker@segaleproperties.com](mailto:ddecker@segaleproperties.com)

# Ground Lease or Build to Suit

## Pacific Gateway Business Park, Lot 3

19.82 ± acres



## SEGALE PROPERTIES

PO Box 88028 Tukwila, WA 98138  
206 575-2000 www.segaleproperties.com

Contact Diane M. Decker, CPM®  
206 575-2000  
ddecke@segaleproperties.com